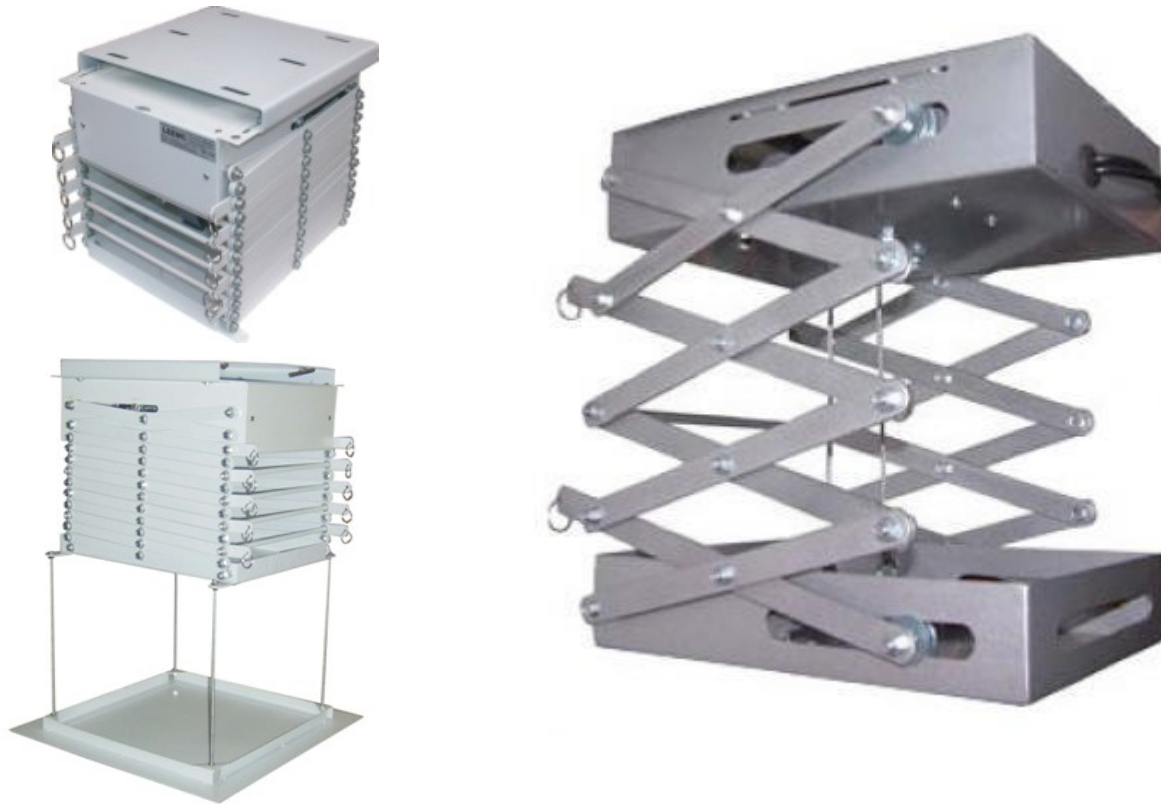


## YTK B-650 5M Projector Lift

(Close, normal setting)



### Features

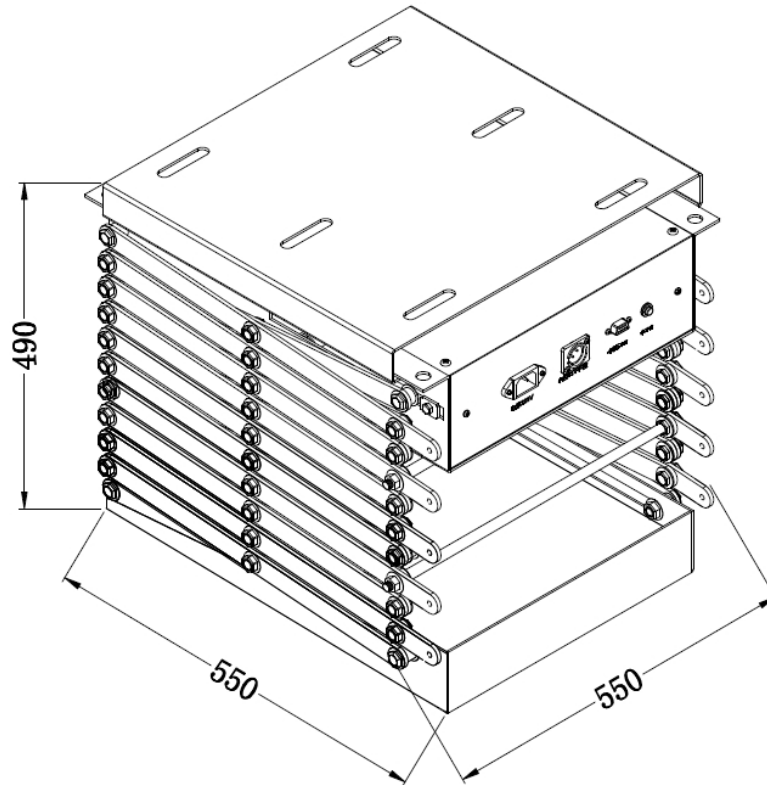
- 5m projector lift
- Supply RS232/RS485, Including: Manual and wireless remote control
- Function: Up, Down, stop
- Material: Iron of A3, Steel wire
- Steel wire rope up to 4mm diameter
- damping motor , Brake Function
- The left / right is 12 groups scissors x 2 , Two section of distance corrections for lift function (close , normal setting)
- The adjustable projector angle mount bracket (the left/right 0-30 ° ; Up/Down 0-40 ° )
- Automatic setting of one section: stop
- Color: Phenolic plastics , Surface treatment: Bake of high temperature

### Specification

- Motion max distance: 5000mm
- Weight: 30kg
- Load weight: 60kg
- Board size L x W (mm): 650 x 650

- Between true ceiling and false ceiling the height(mm): 600
- Power Supply: 220 V / 50 ~ 60 Hz
- Dimensions: 550(W) x 550 (D) x490(H) mm.

## **Drawing**



### **Built-in Wireless control:**

- Control mode : RF wireless control
- Function: Up, Down, stop



### **Suitable use:**

Hall, Lecture Theaters, Cinemas

**Warranty: 12 Month**

**CB CE**

[www.ytk.com.hk](http://www.ytk.com.hk)